

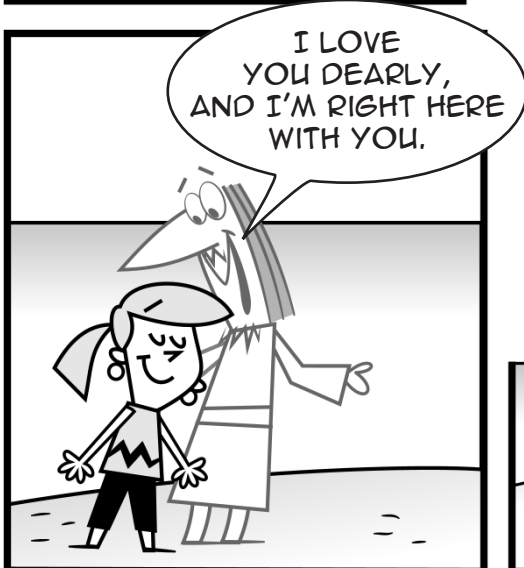
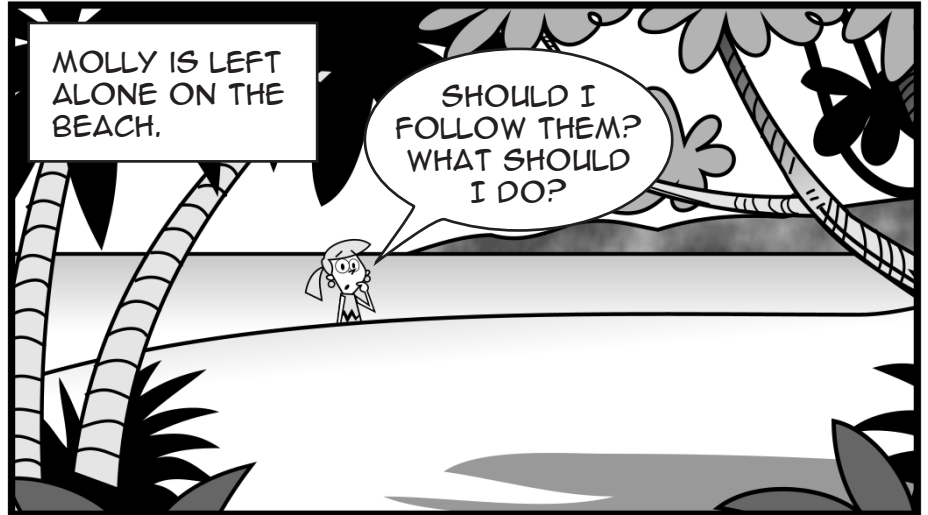
# TIME TRAVELERS

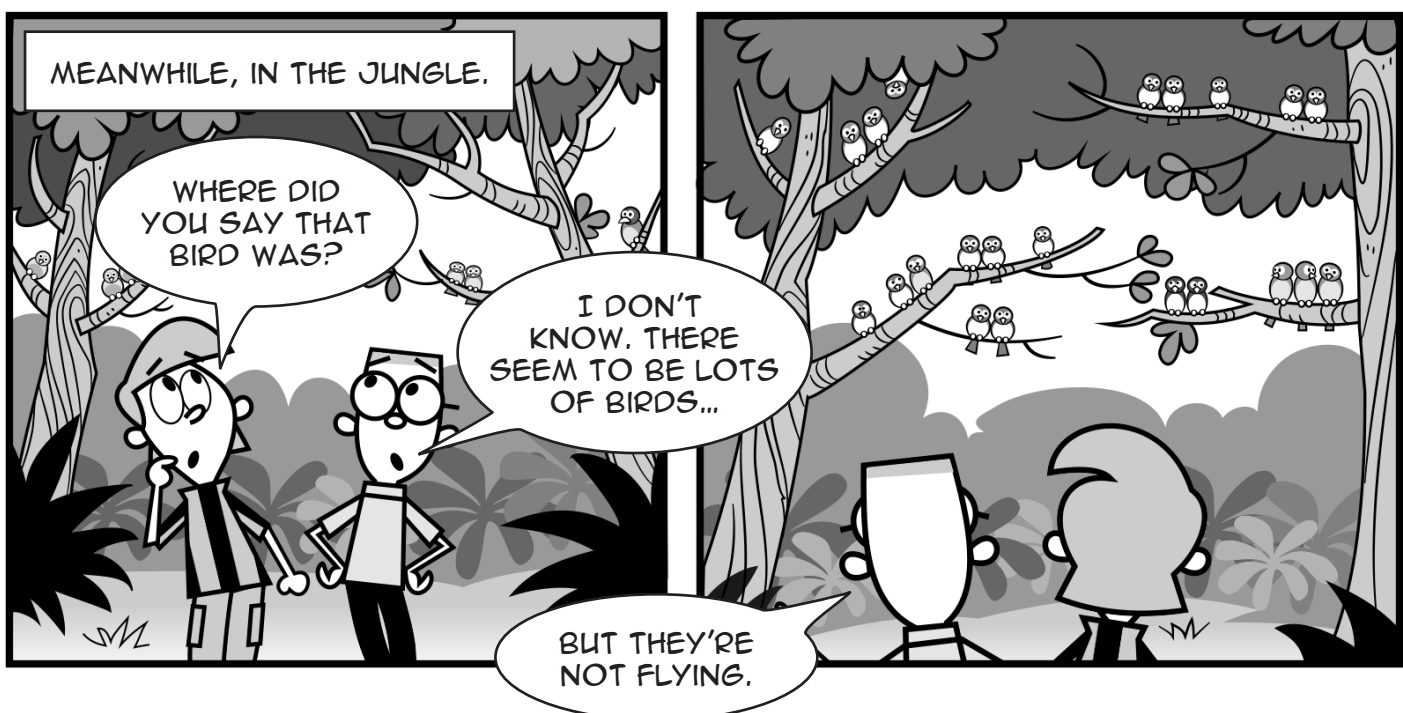
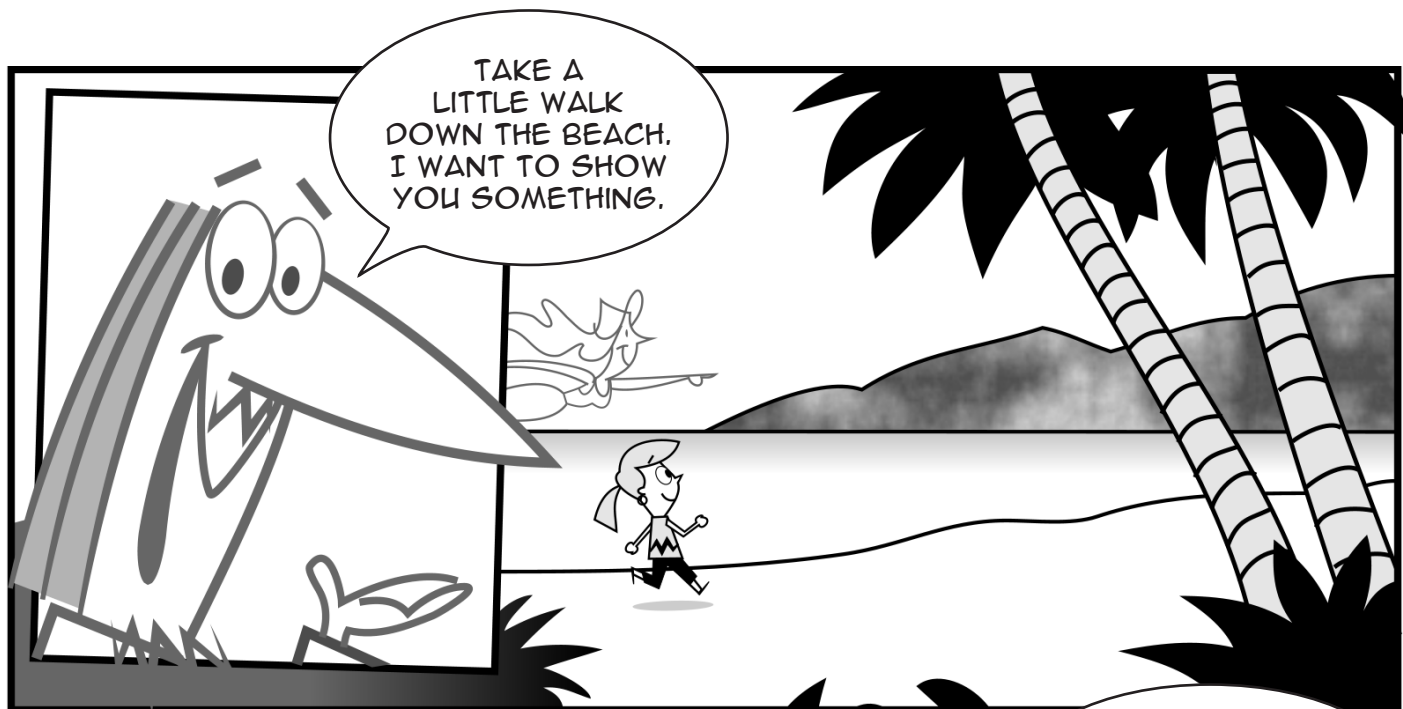
## THE SOUTH PACIFIC MISSION

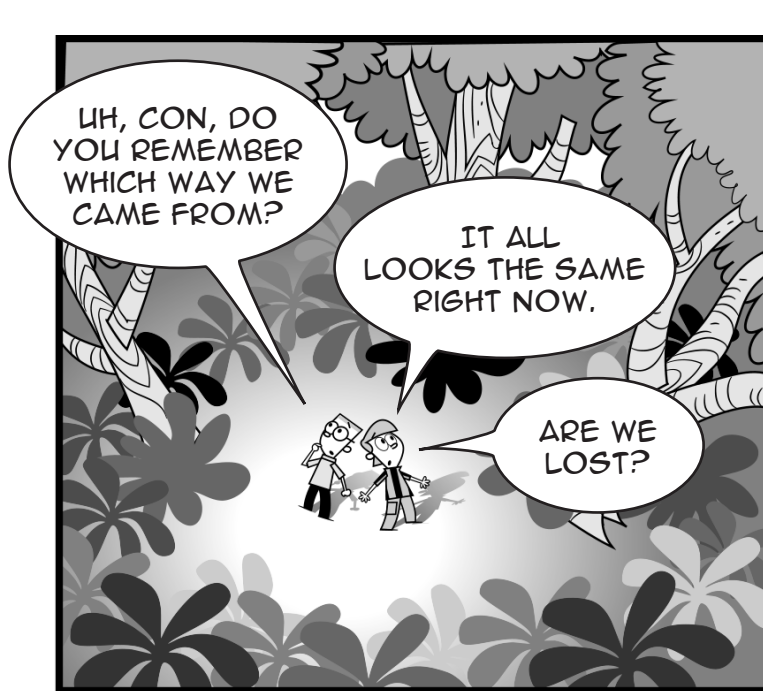
### PART TWO

#### THE STORY SO FAR:

WHILE VISITING A MUSEUM, CONNOR, MOLLY, AND FINN ARE TRANSPORTED BACK TO 1885 AND FIND THEMSELVES ABOARD A SHIP IN THE MIDDLE OF THE SOUTH PACIFIC OCEAN. AS A TEMPEST HOWLS, ALL THREE ARE WASHED OVERBOARD, AND SOME TIME LATER FIND THEMSELVES STRANDED ON AN ISOLATED ISLAND. CONNOR AND FINN HAVE RUN INTO THE JUNGLE CHASING A BIRD WHICH THEY THINK WILL LEAD THEM TO WATER.











BACK ON THE BEACH.

I'M TAKING CARE OF CONNOR AND FINN, JUST AS I'M TAKING CARE OF YOU.

I PROVIDED YOU WITH A TENT TO SLEEP IN. YOU'LL BE SAFE HERE UNTIL THEY RETURN.

EARLY THE NEXT MORNING.

CONNOR!  
FINN! IT'S SO GOOD TO SEE YOU!

WE ASKED JESUS TO SHOW US WHICH WAY TO GO, AND HE HELPED US TO FIND OUR WAY OUT OF THE JUNGLE.

IT'S OKAY.

MOLLY, I'M SORRY THAT I DIDN'T LISTEN TO YOU. YOU WERE RIGHT—WE SHOULD HAVE STOPPED TO PRAISE AND PRAY AS SOON AS WE LANDED ON THE BEACH.

