

Peace in the Midst of the Storm

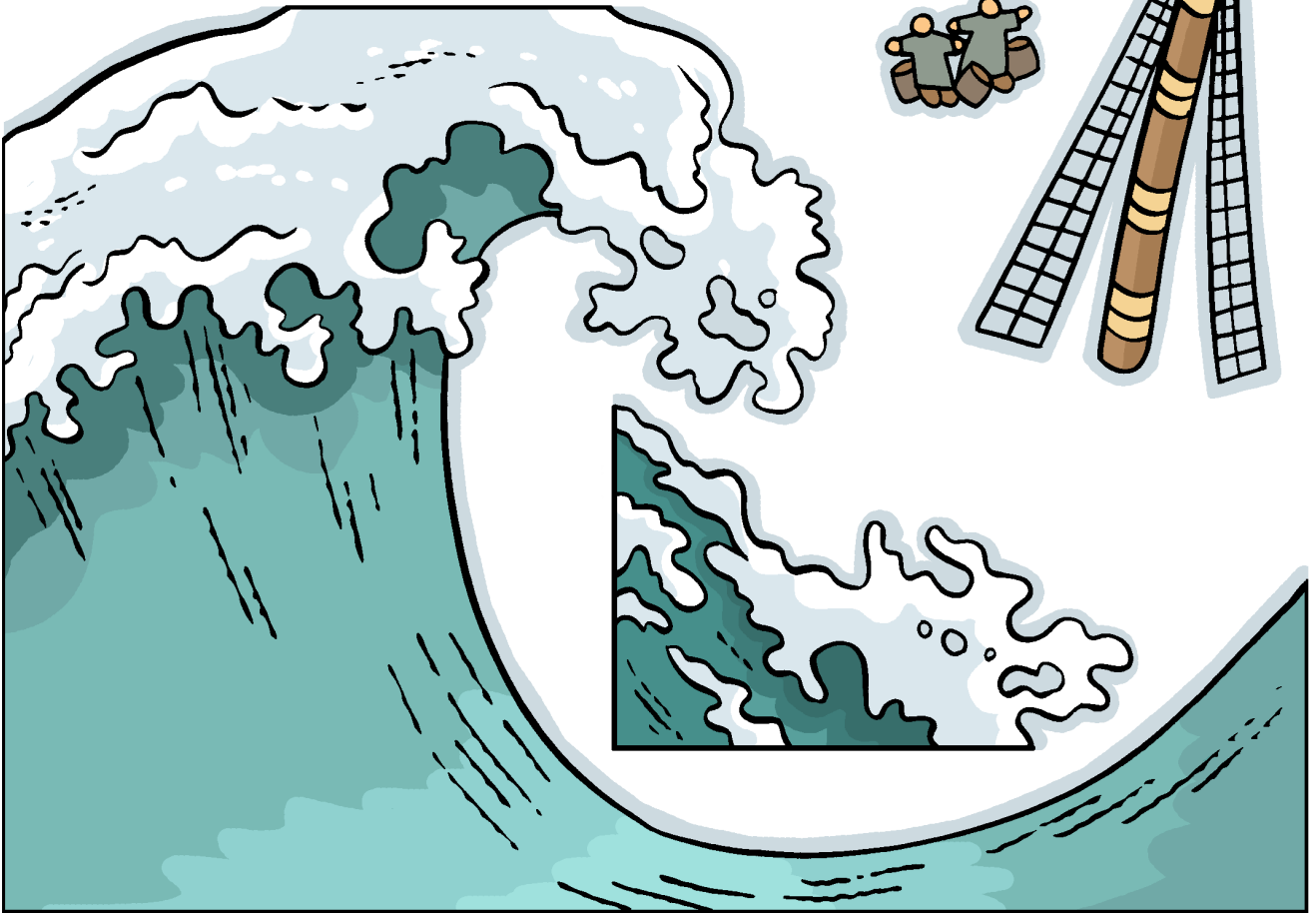
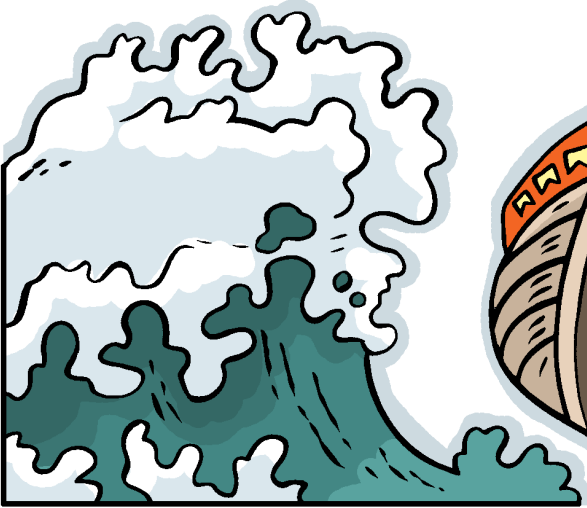
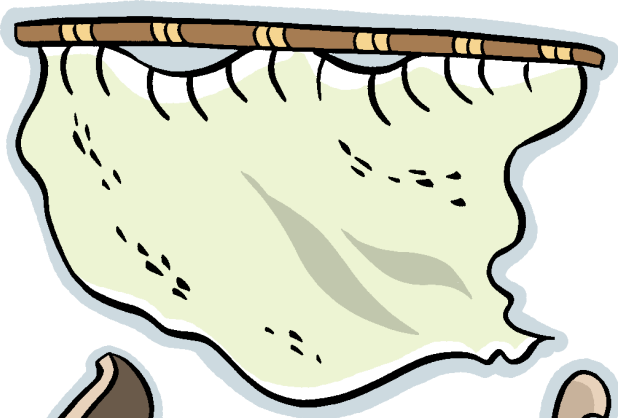
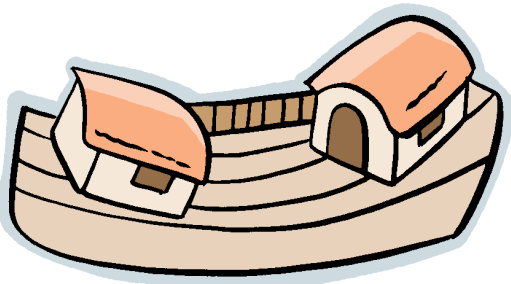
(Acts 27)

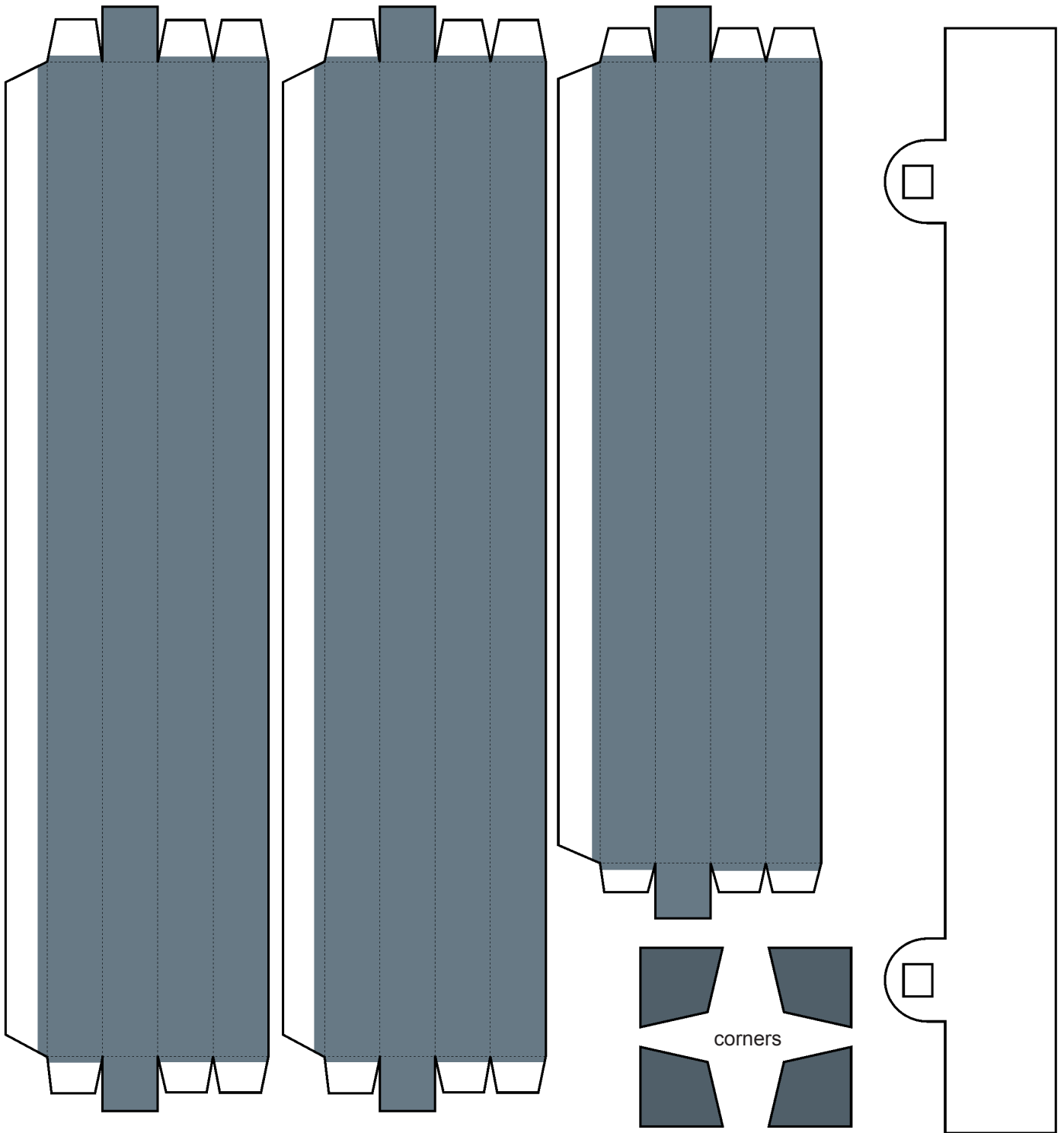
For the long and difficult trip to Rome, Paul was put in the care of Julius, a Roman centurion who was to transport a group of prisoners. At one point, near the island of Crete, the ship they traveled on ran into a devastating storm.

The ship was violently tossed about on the waves. Those on the ship threw the cargo overboard and later the ship's tackle, to lighten the ship in an attempt to keep it from scraping its bottom against a reef or rocks. The storm continued for many days, blocking view of both the sun and the stars.

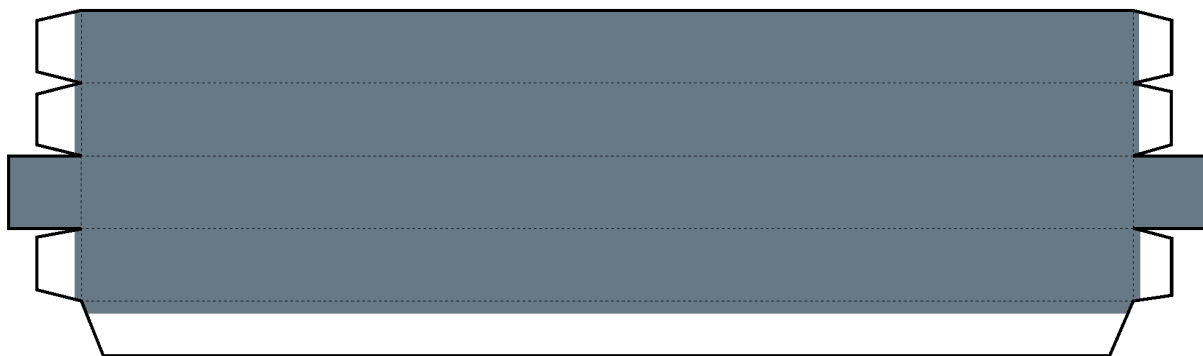
The crew and passengers lost all hope for survival. But Paul told them to have courage. He explained to them that an angel from God had appeared to him during the night reassuring him that all aboard the ship would survive.

After over two weeks of stormy seas, their ship was wrecked on a reef near the shore, and all made it safely to land.



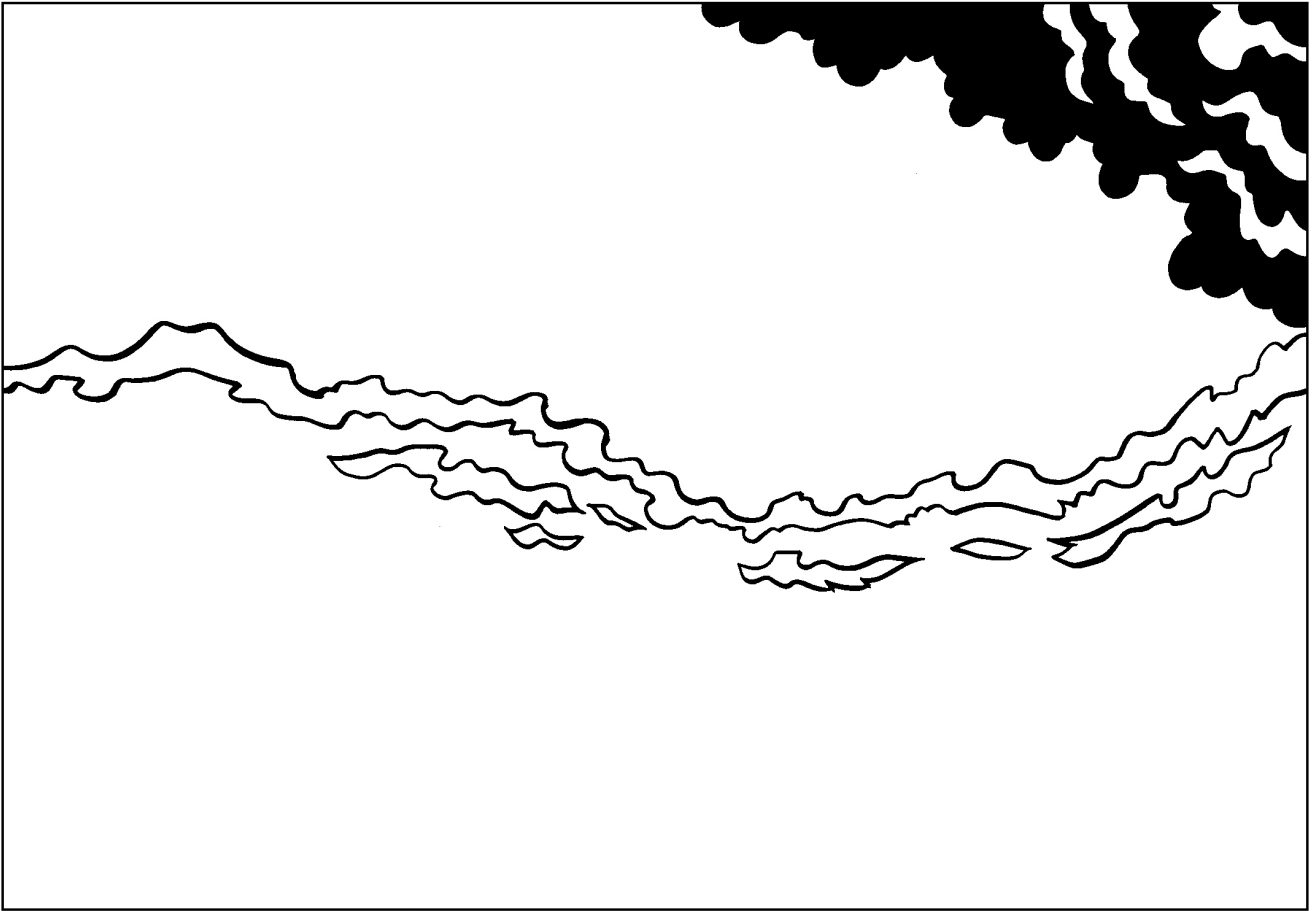


corners



frame parts

Part to glue on the back after attaching a string.
(See [illustrated intructions.](#))



Peace in the Midst of the Storm

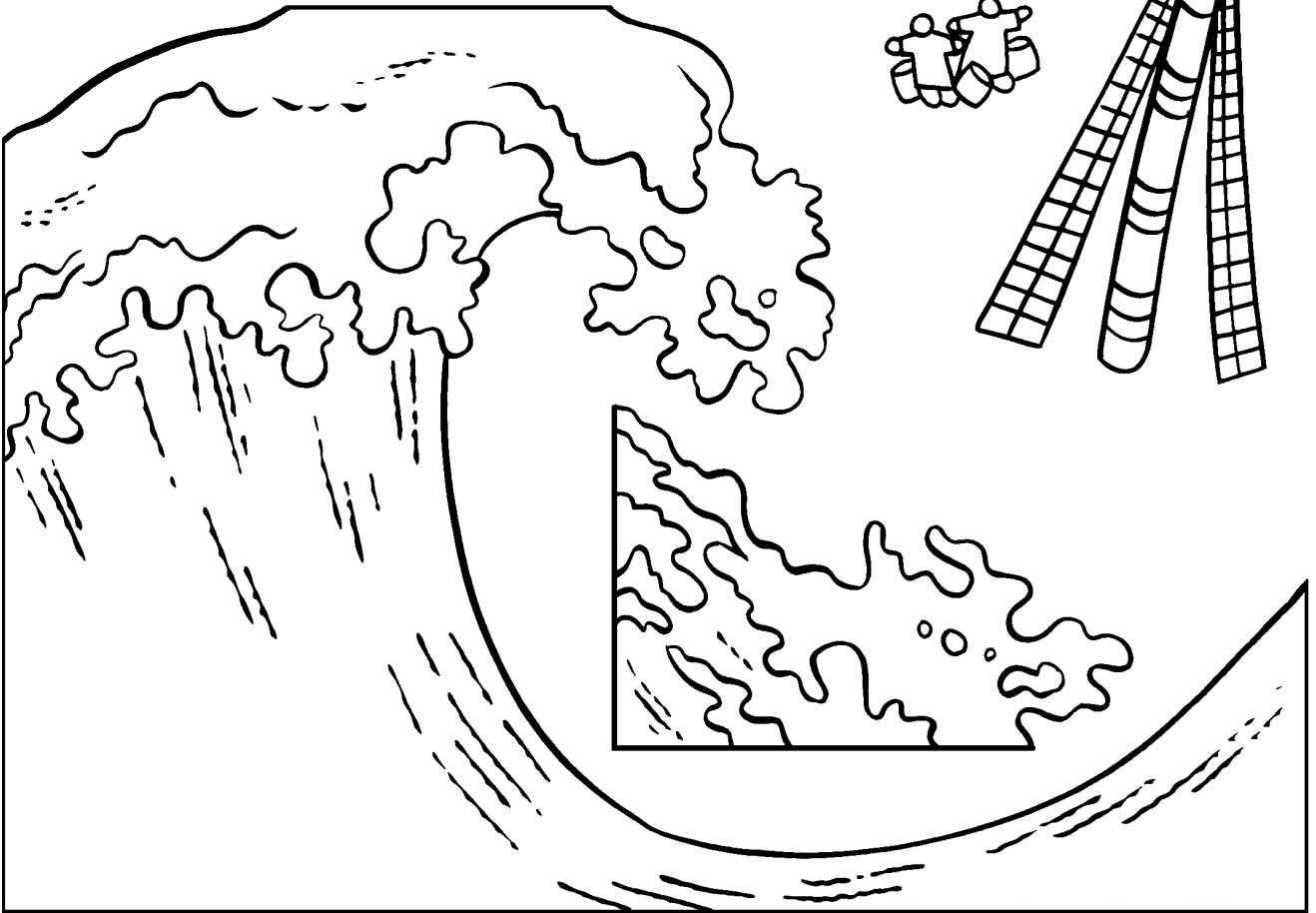
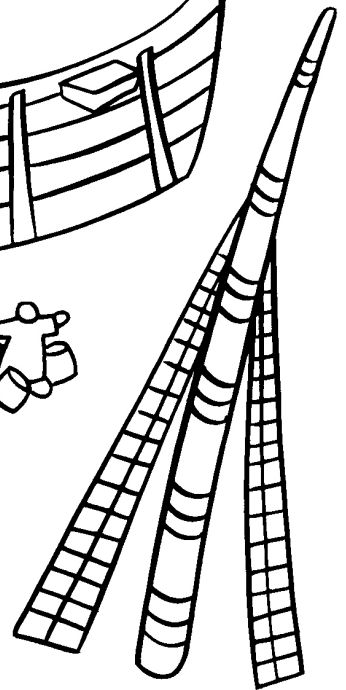
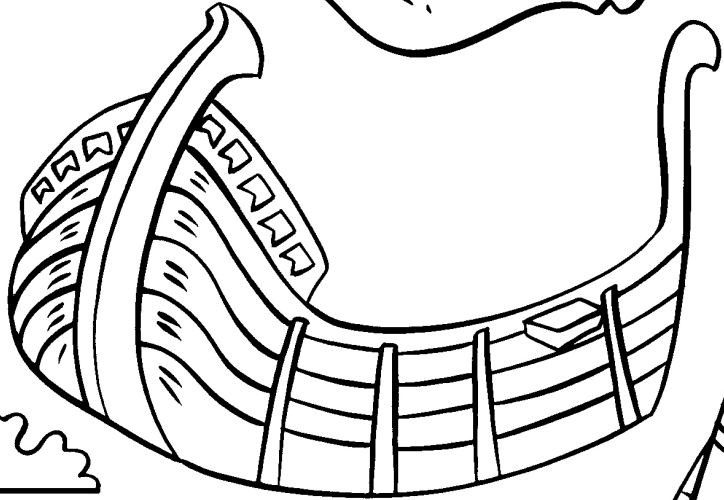
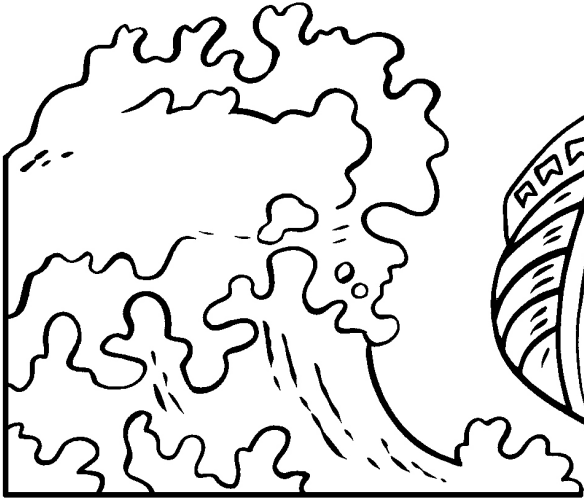
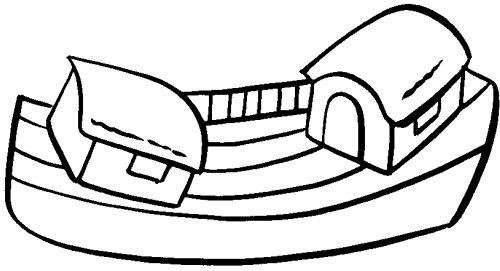
(Acts 27)

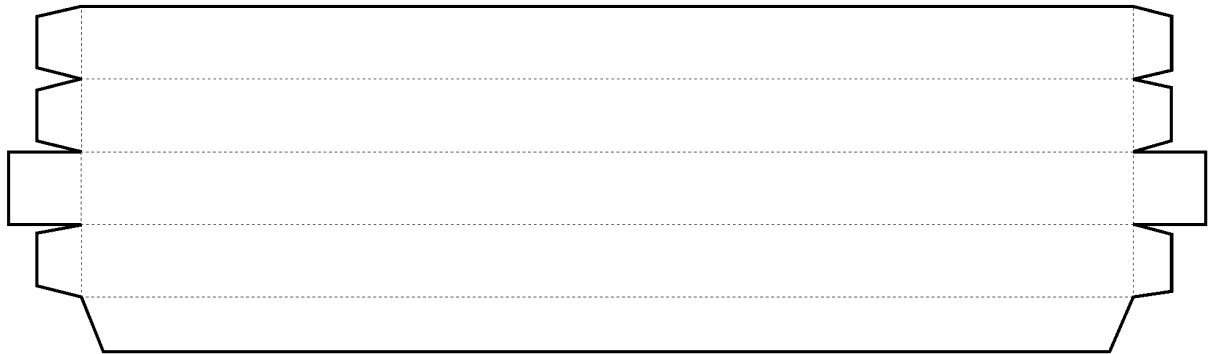
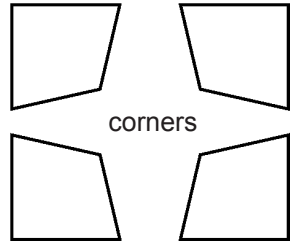
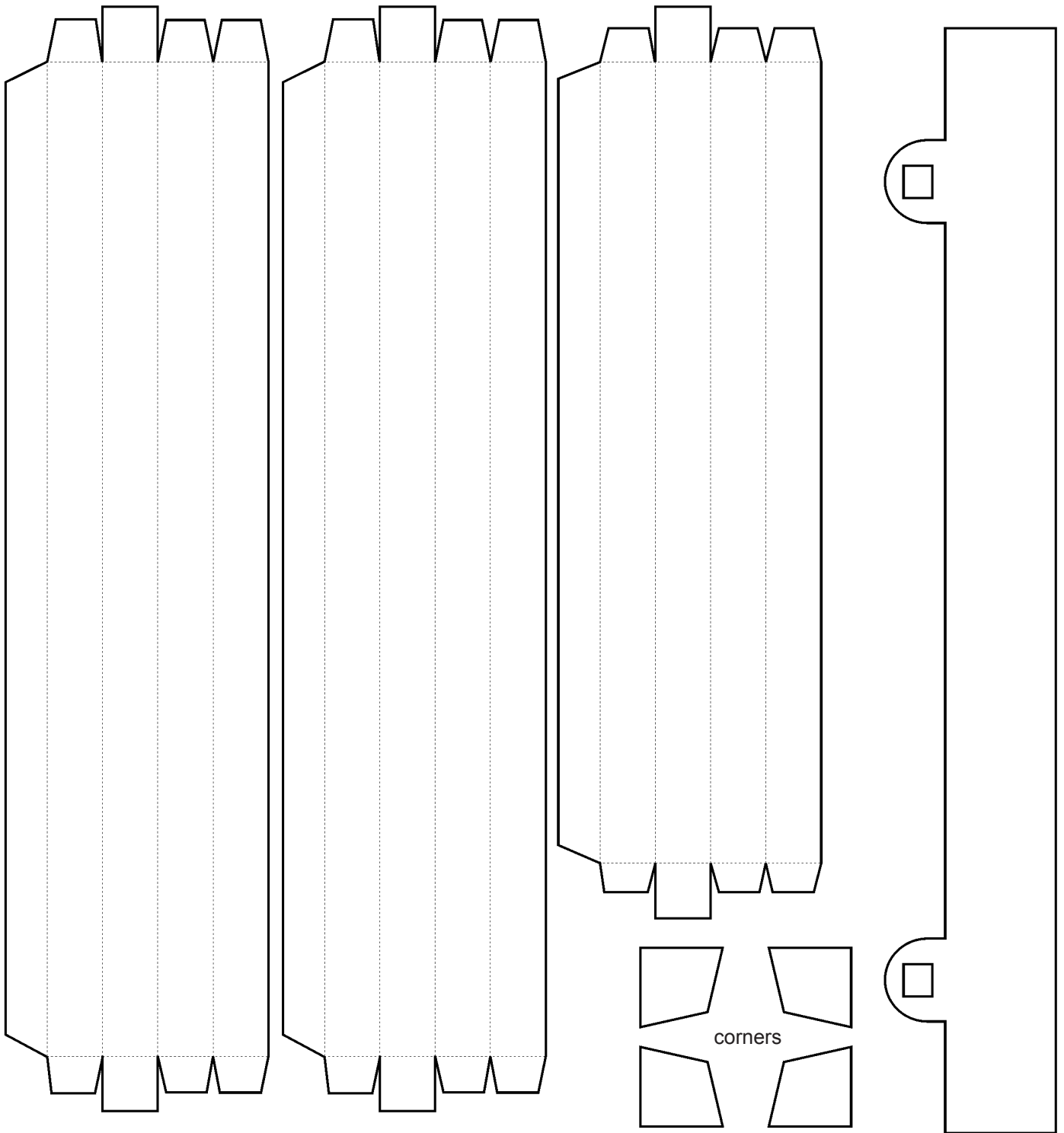
For the long and difficult trip to Rome, Paul was put in the care of Julius, a Roman centurion who was to transport a group of prisoners. At one point, near the island of Crete, the ship they traveled on ran into a devastating storm.

The ship was violently tossed about on the waves. Those on the ship threw the cargo overboard and later the ship's tackle, to lighten the ship in an attempt to keep it from scraping its bottom against a reef or rocks. The storm continued for many days, blocking view of both the sun and the stars.

The crew and passengers lost all hope for survival. But Paul told them to have courage. He explained to them that an angel from God had appeared to him during the night reassuring him that all aboard the ship would survive.

After over two weeks of stormy seas, their ship was wrecked on a reef near the shore, and all made it safely to land.





Part to glue on the back after attaching a string.
(See [illustrated instructions](#).)

frame parts