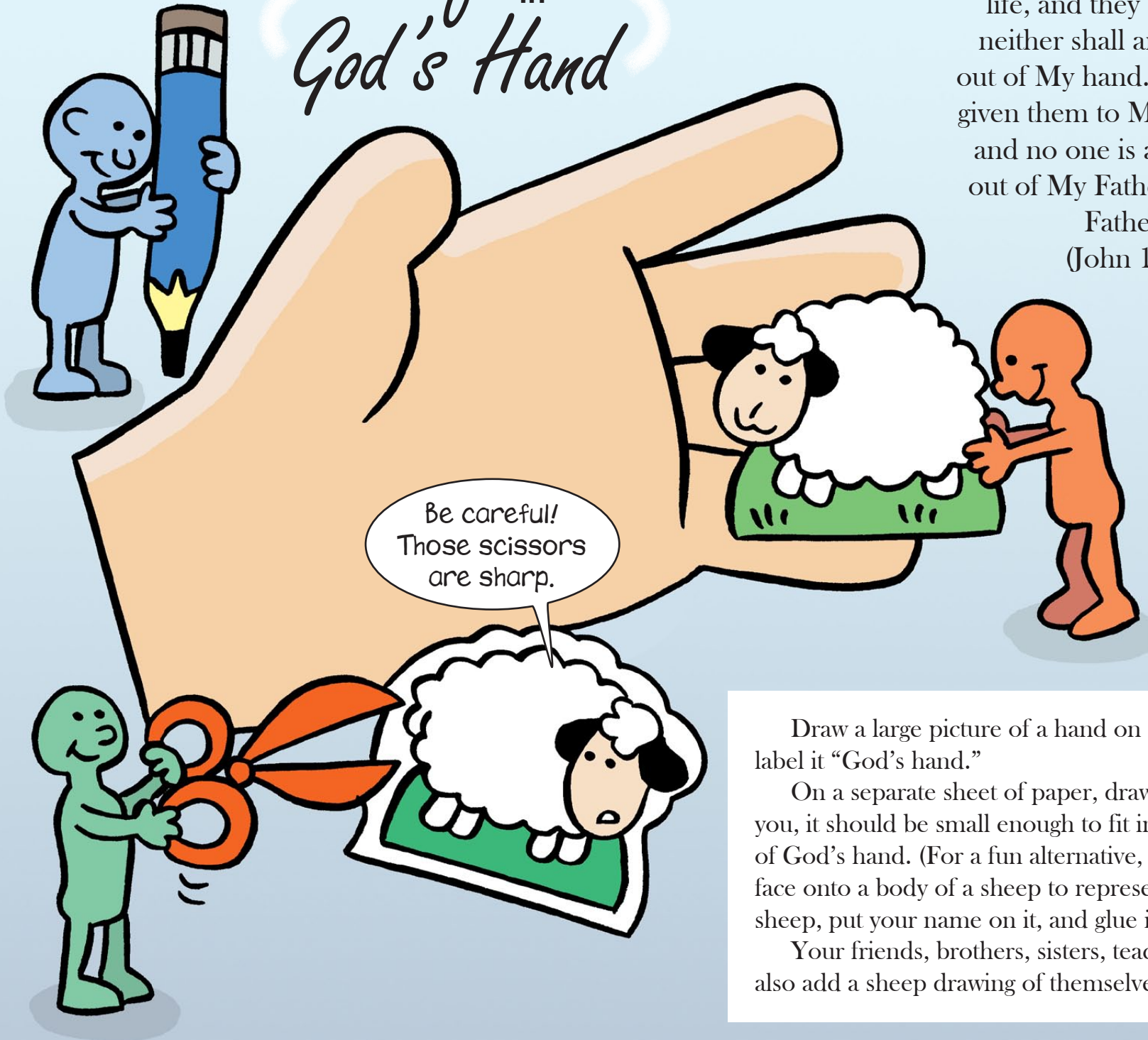


Safe in God's Hand



And I [Jesus] give them eternal life, and they shall never perish; neither shall anyone snatch them out of My hand. My Father, who has given them to Me, is greater than all; and no one is able to snatch them out of My Father's hand. I and My Father are one.

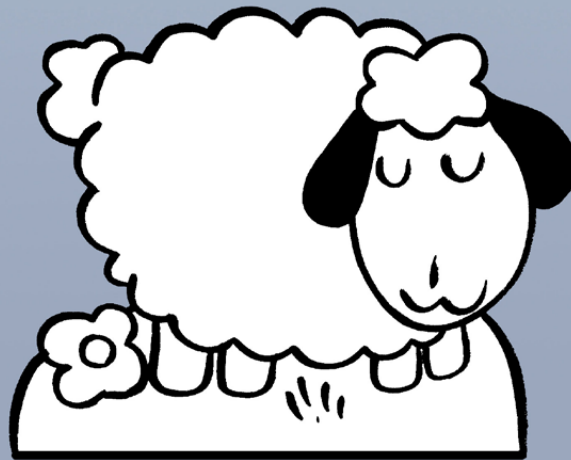
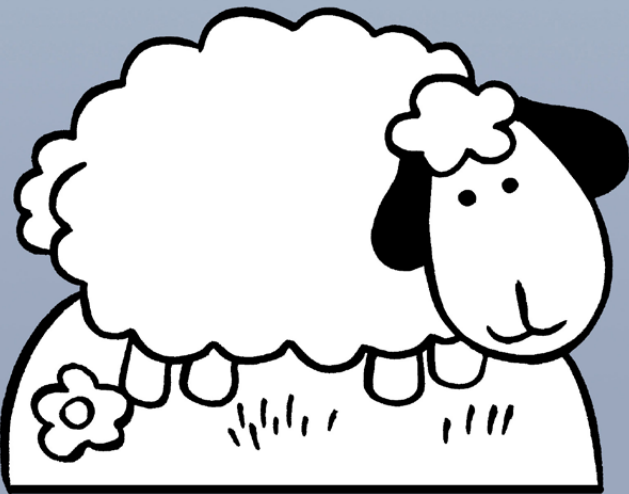
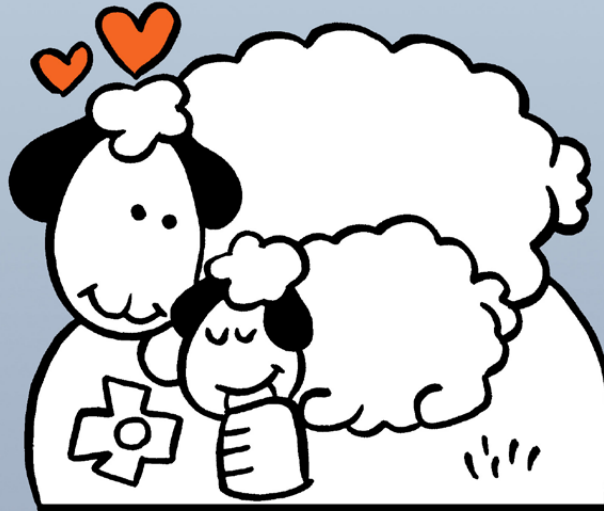
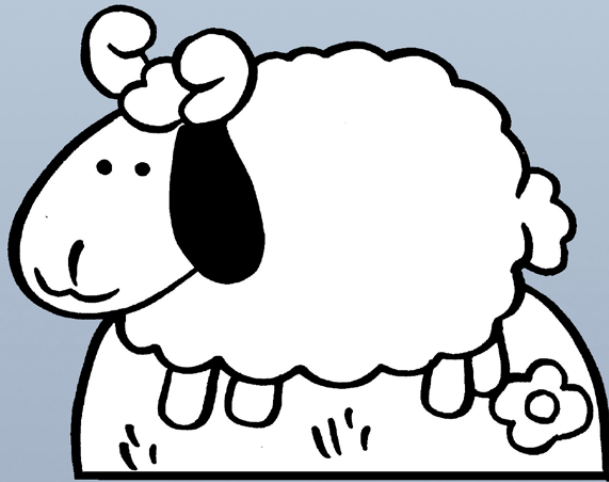
(John 10:28-30 NKJ)

Draw a large picture of a hand on a piece of paper and label it "God's hand."

On a separate sheet of paper, draw a sheep that represents you, it should be small enough to fit in the picture you drew of God's hand. (For a fun alternative, glue a photo of your face onto a body of a sheep to represent you.) Cut out the sheep, put your name on it, and glue it onto God's hand.

Your friends, brothers, sisters, teacher, and parents can also add a sheep drawing of themselves to God's hand.

Sample pictures to trace
or color and cut out



S&S link: Christian Life and Faith: Biblical and Christian Foundation: Salvation-1a
Authored by Christi S. Lynch. Illustrations by Didier Martin. Design by Christia Copeland. Published by My Wonder Studio. Copyright © 2011 by The Family International